

Shendra-Bidkin Industrial Park

Area: **84** sq. km

Population: **0.5** mn





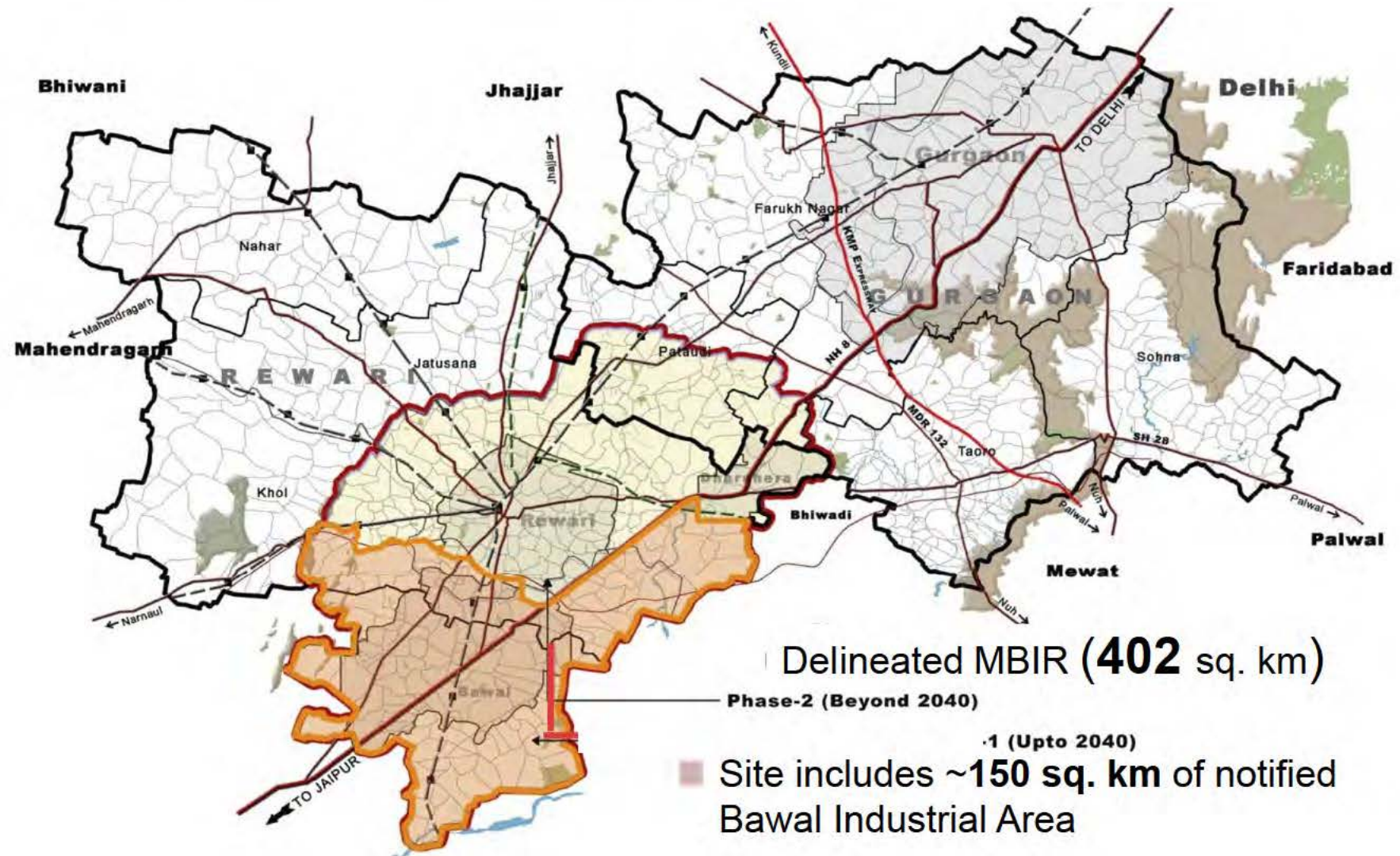


Exhibition cum Convention Centre, Aurangabad

- Early Bird Project
- Site: **50 acres**
- Built up area: ECC:
30,000 sq. m



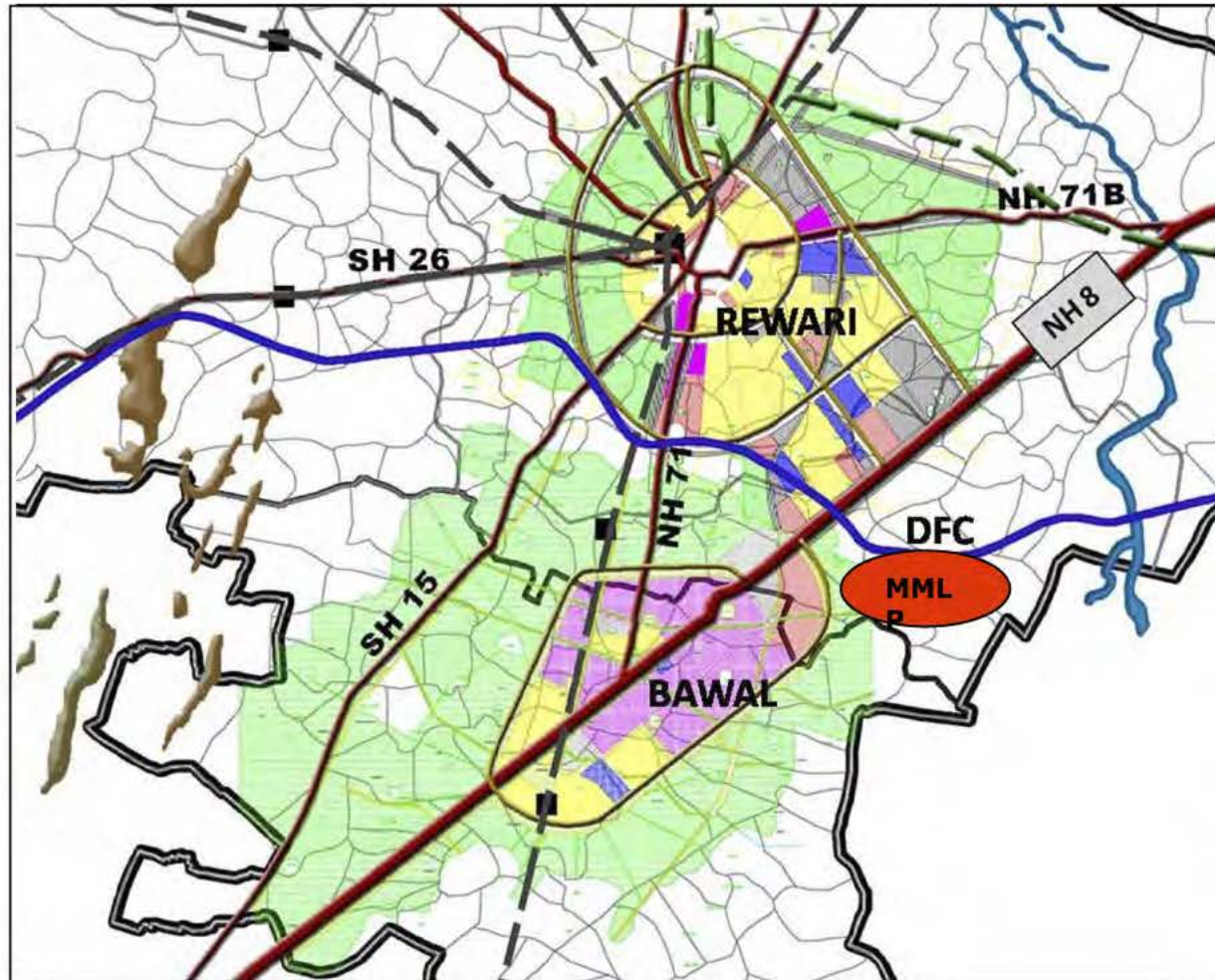
Manesar – Bawal Investment Region



This map illustrates the land use planning for the City of Salem, Oregon. The city's jurisdiction is outlined by a thick green line. The map is divided into several color-coded zones: yellow for residential, purple for commercial, green for industrial, and blue for public use. Major roads are labeled with numbers like SH 24, SH 15, SH 16, SH 53, and NH 71B. The city is surrounded by a green border, and the map includes a scale bar at the bottom left.

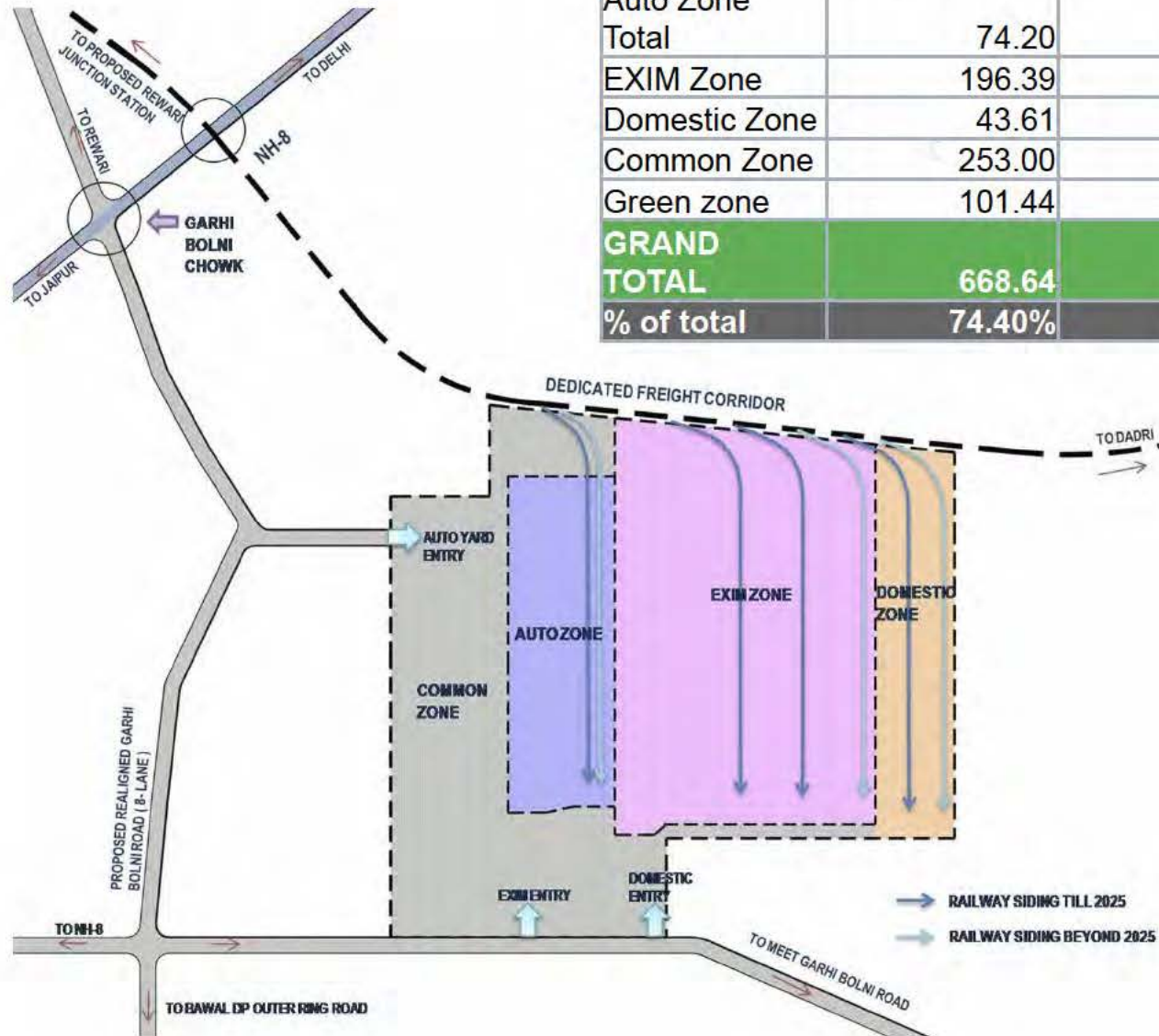


Multi Modal Logistics City at Rewari



- Strategically located at intersection of National Highway 8 and DFC
- Potential to become a Regional Hub serving NCR, especially Gurgaon, Bhiwadi and DMIC Manesar-Bawal & Neemrana Investment Regions
- Capacity: >**1.39** mn TEUs per yr plus Automobile traffic
- Site: ~ **900** acres

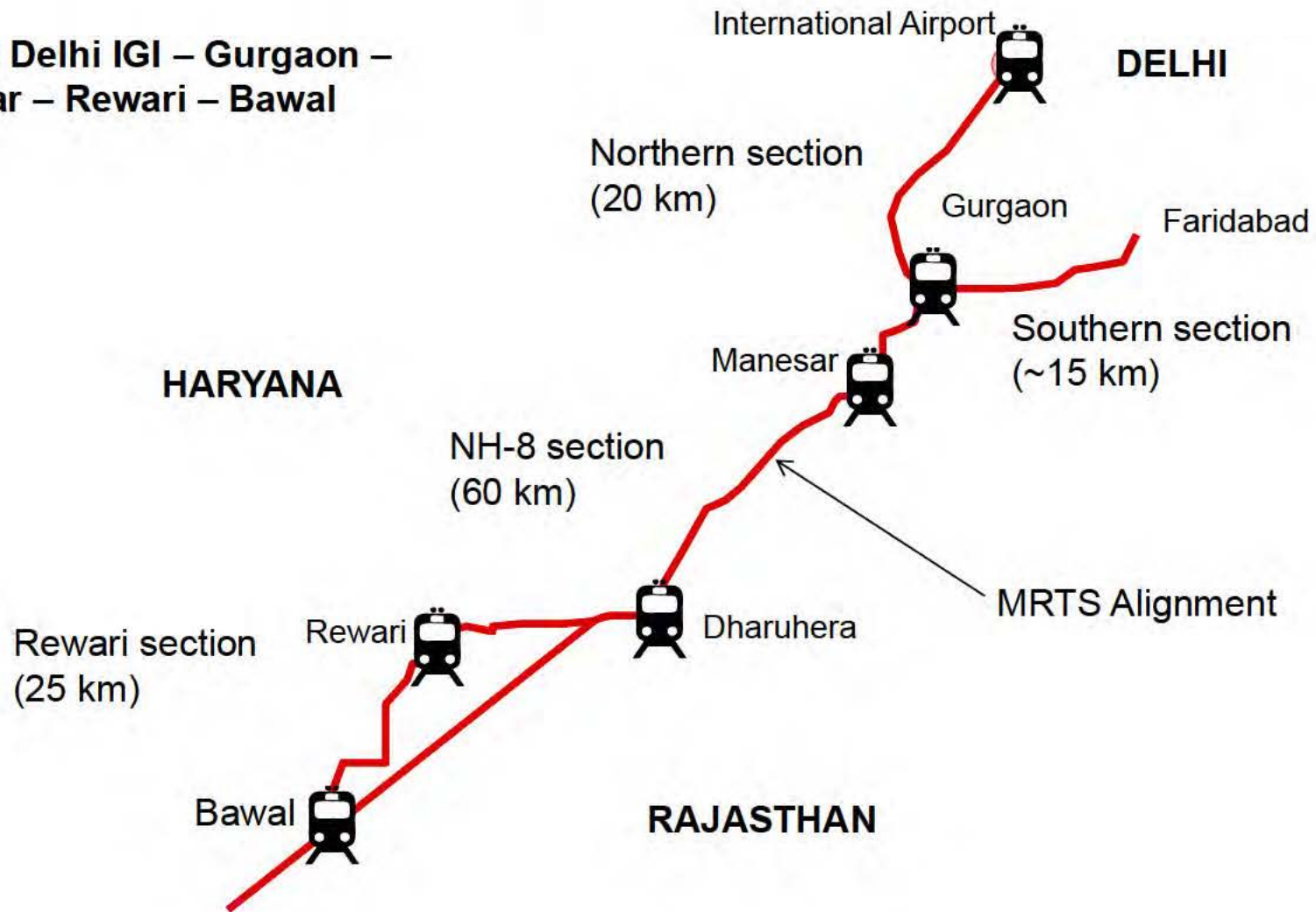
Zoning Plan



Description	2025 (Acre)	Beyond 2025	Total Area	%
Auto Zone				
Total	74.20	52.56	126.76	14.11%
EXIM Zone	196.39	118.62	315.01	35.05%
Domestic Zone	43.61	44.28	87.88	9.78%
Common Zone	253.00	14.58	267.58	29.77%
Green zone	101.44	0.00	101.44	11.29%
GRAND TOTAL	668.64	230.04	898.67	100.00 %
% of total	74.40%	25.60%	100.00%	

MRTS: Delhi IGI – Bawal

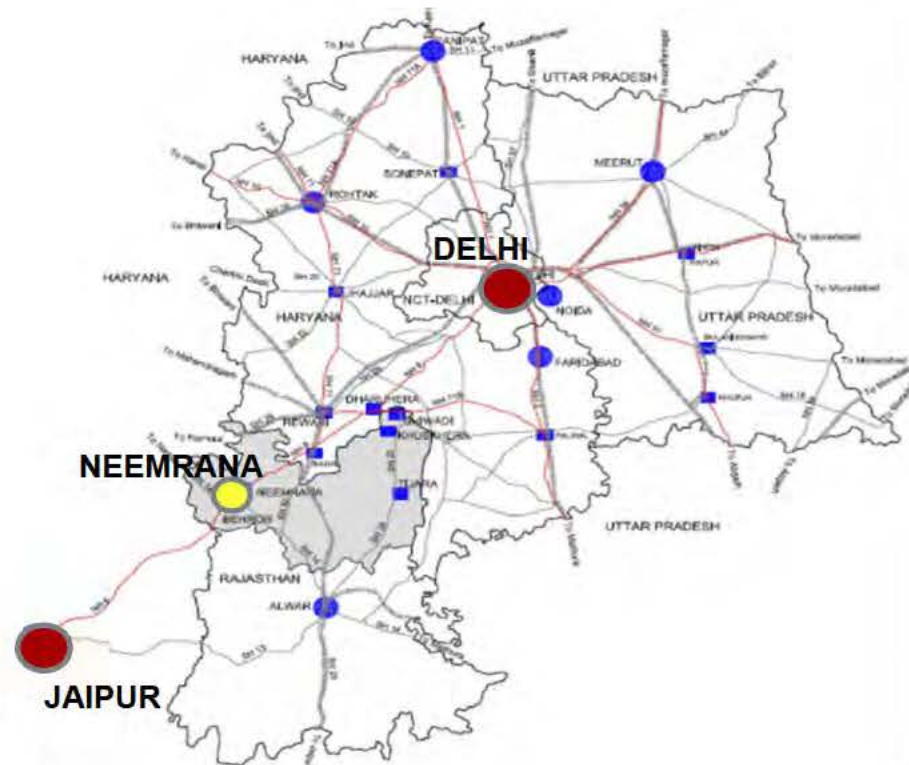
Route : Delhi IGI – Gurgaon –
Manesar – Rewari – Bawal



Total route length ~**120** km

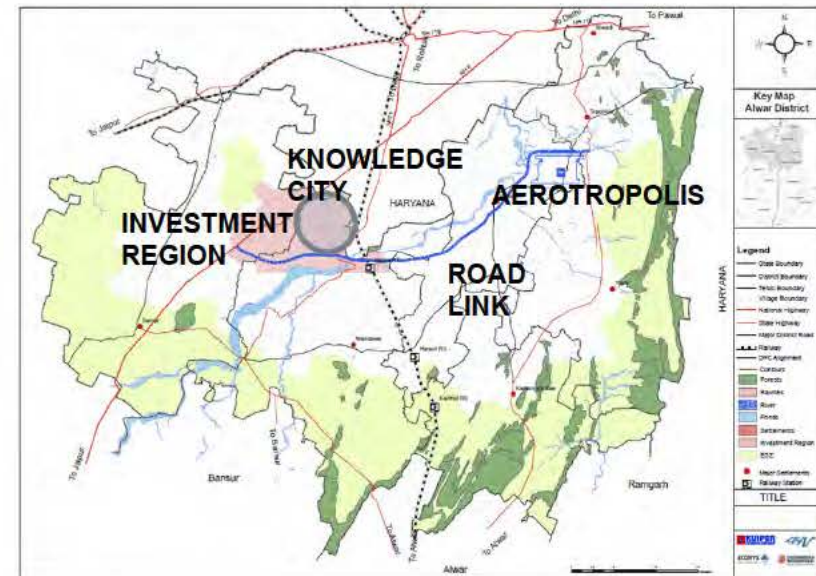
Can be extended upto Neemrana Node in Rajasthan

Khushkhera-Bhiwadi-Neemrana IR



Early Bird Projects:

- Aerotropolis
- Knowledge city
- Neemrana - Bhiwadi Road link (50 km)



Concept Master Plan for KBN Investment Region

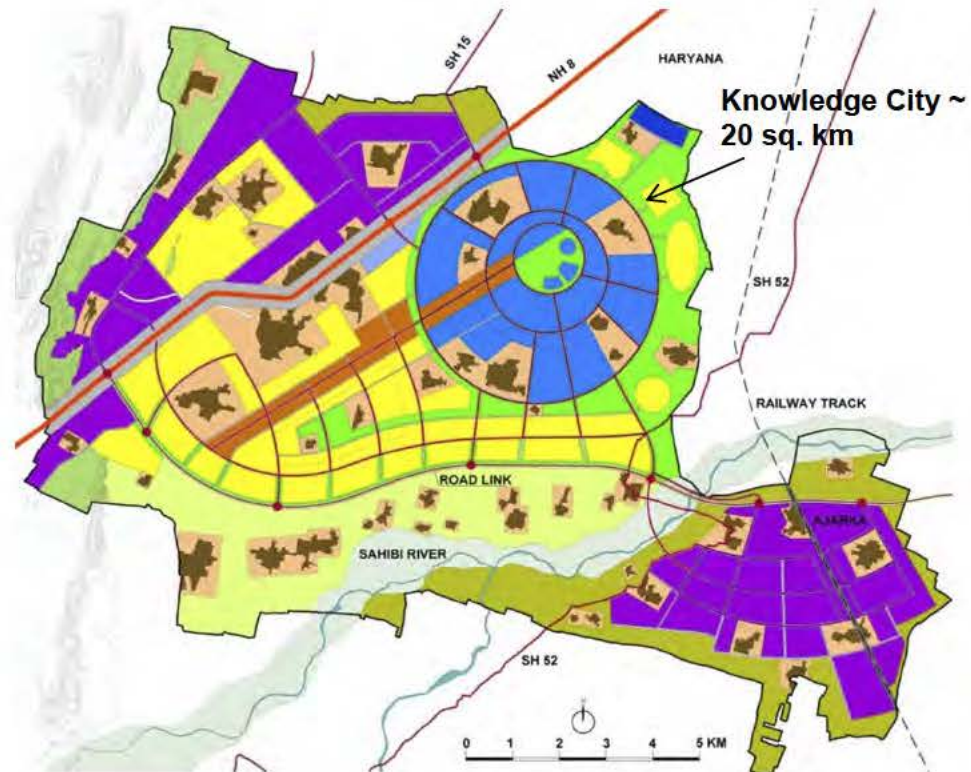
Area: **165** sq. km

Urbanisable Area – 101 sq. km

Target Population: **1.3** million

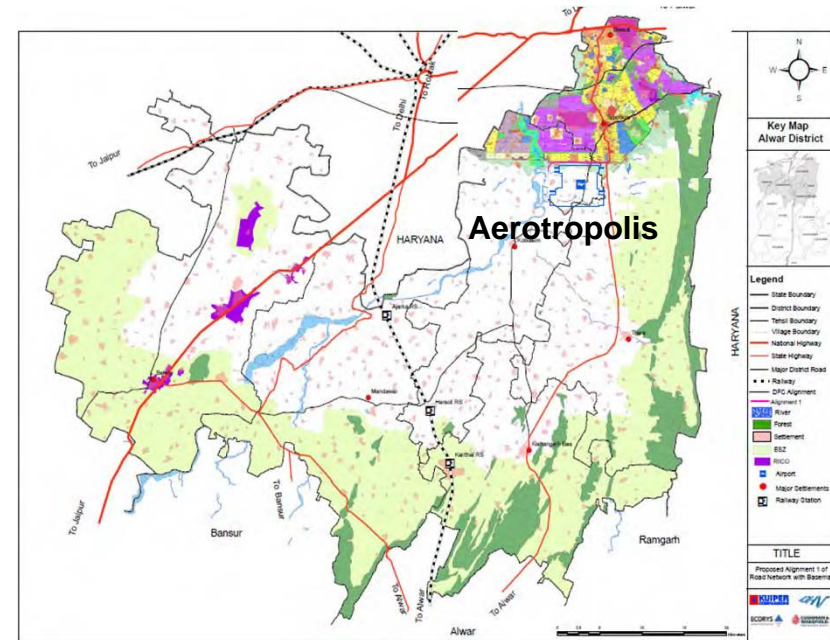
Projected Employment – **0.55** mn

Investment Region target industries -
Electronic, Automotive, Pharmaceuticals,
Bio- tech and ICT

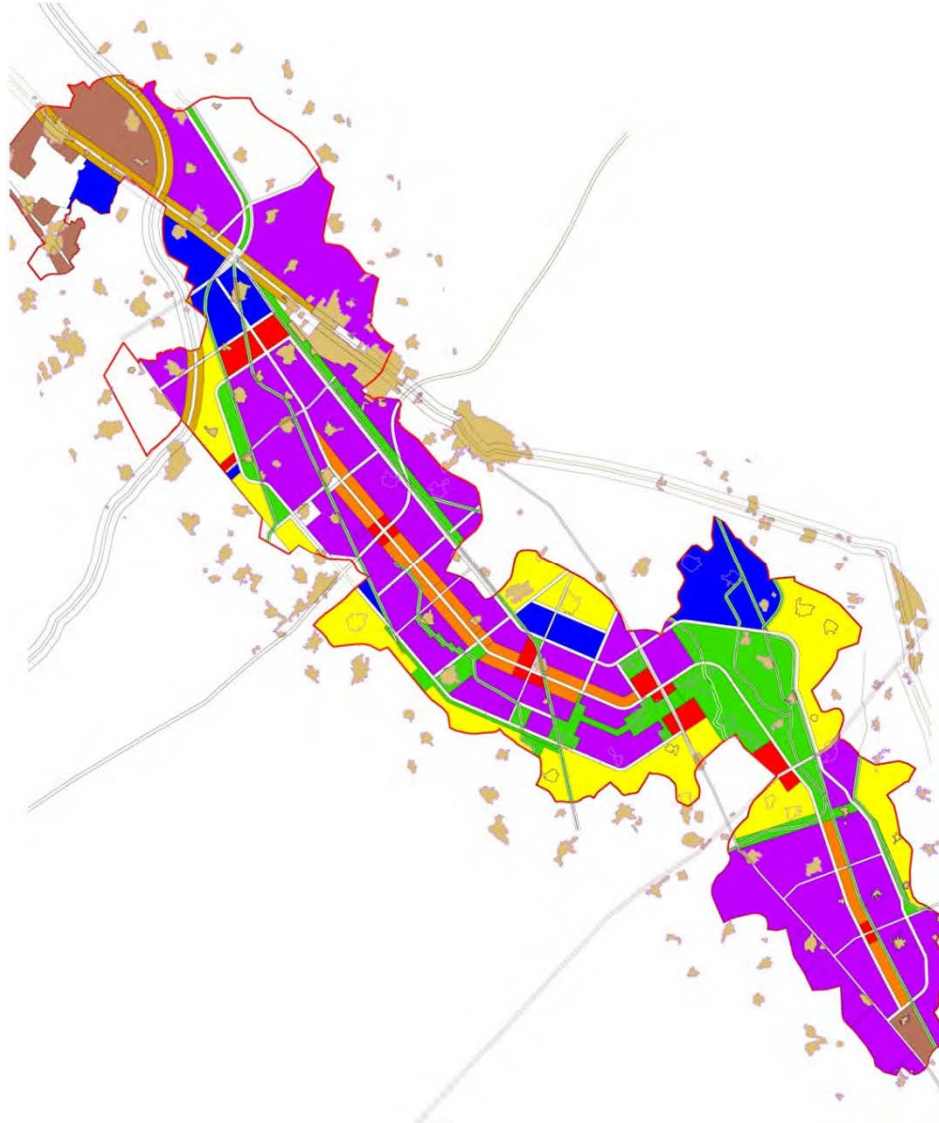


Aerotropolis

- Strategically located between Delhi and Jaipur , south of Bhiwadi Master Plan Area
- Total Area: **24 sq. km**
- Total Cost: Rs. **4000** crores
- **Components:**
 - Passenger & Cargo traffic handling
 - Non aviation - Business Parks, Hotels, Distribution centers etc.
 - Maintenance Repair Overhaul (MRO)



Dadri Noida Ghaziabad Investment Region – Master Plan



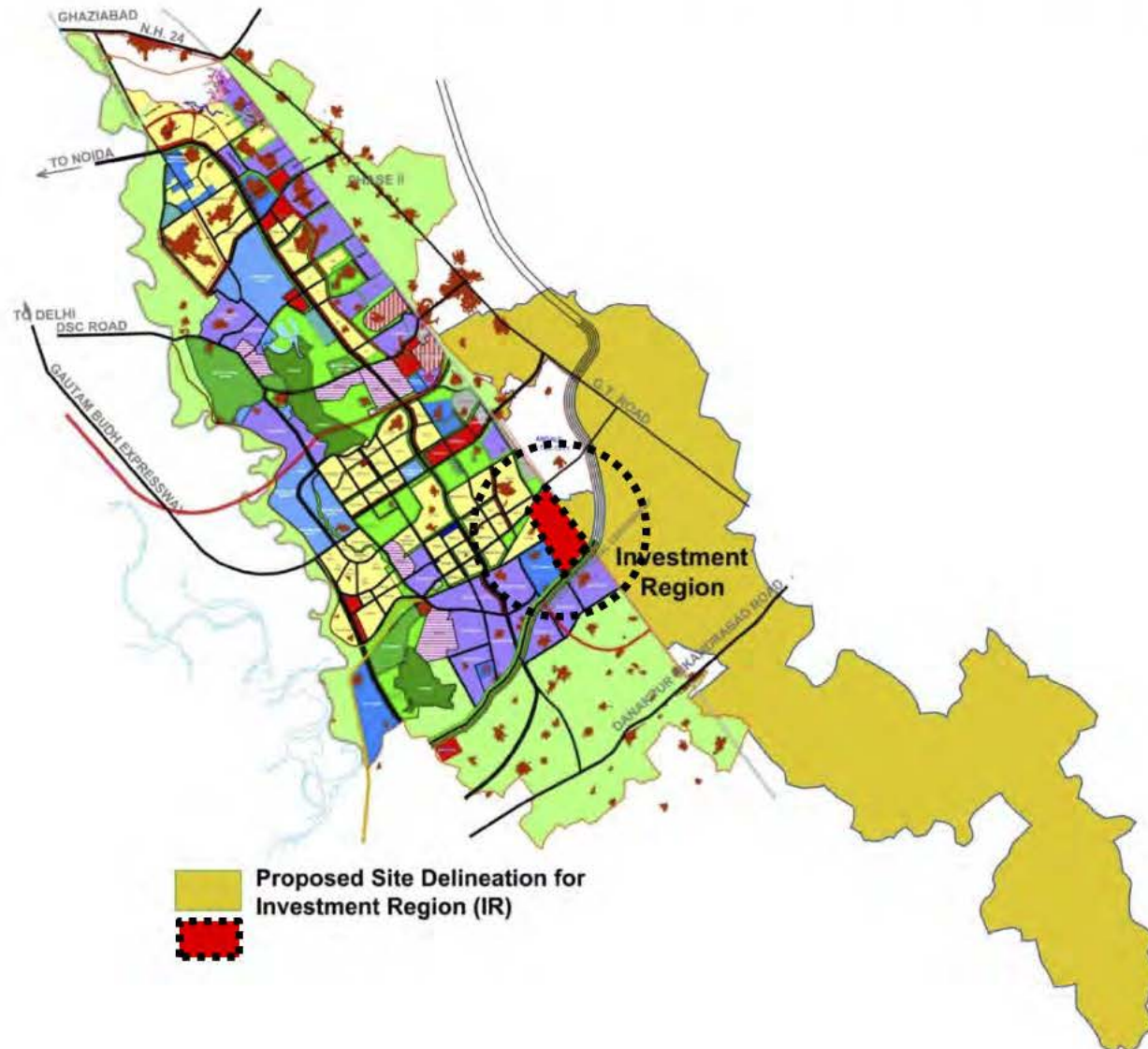
Total Area: Approx 210 sq kms

Land Use	%
Industrial Area	37
Residential	14
Commercial	4
Public - Semi Public Facilities	6
Utilities	1
Transportation	14
Green Areas / Agriculture	17
Non Developable area	7
Total	100

Integrated Industrial Township- Site Location

Hi Tech Integrated Township

Located in Greater Noida
Spread over an area of
747.5 acres



Villages :

1. Rithori,
2. Raipur Bangar,
3. Dhabra,
4. Gohri Bachera
5. Ajaibpur
6. Maycha

Integrated Industrial Township-Project Components

Promoting Knowledge – based Hi-tech Industries



New age industry sectors

R&D Services

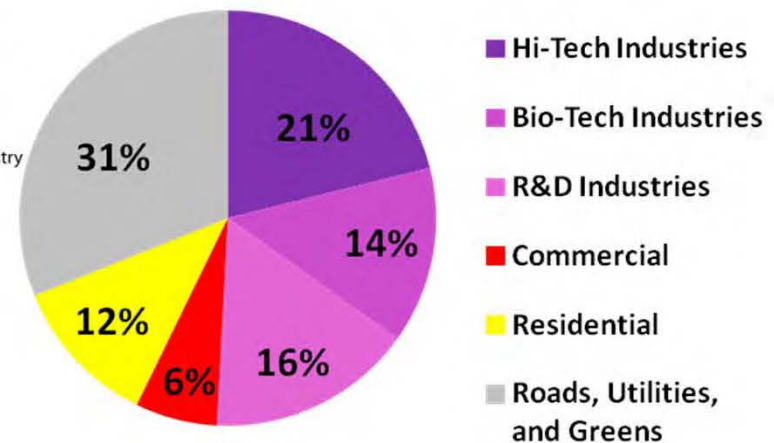
Auto, Electronics, ICT

Hi-tech Industries

Fabrication
(semiconductors)
industries,
Nanotechnology,
Optoelectronics

Bio-technology

Bio-Pharma,
Bio-Services
(clinical research),
Bio-Agri,
Bio-Industrial,
Bio Informatics

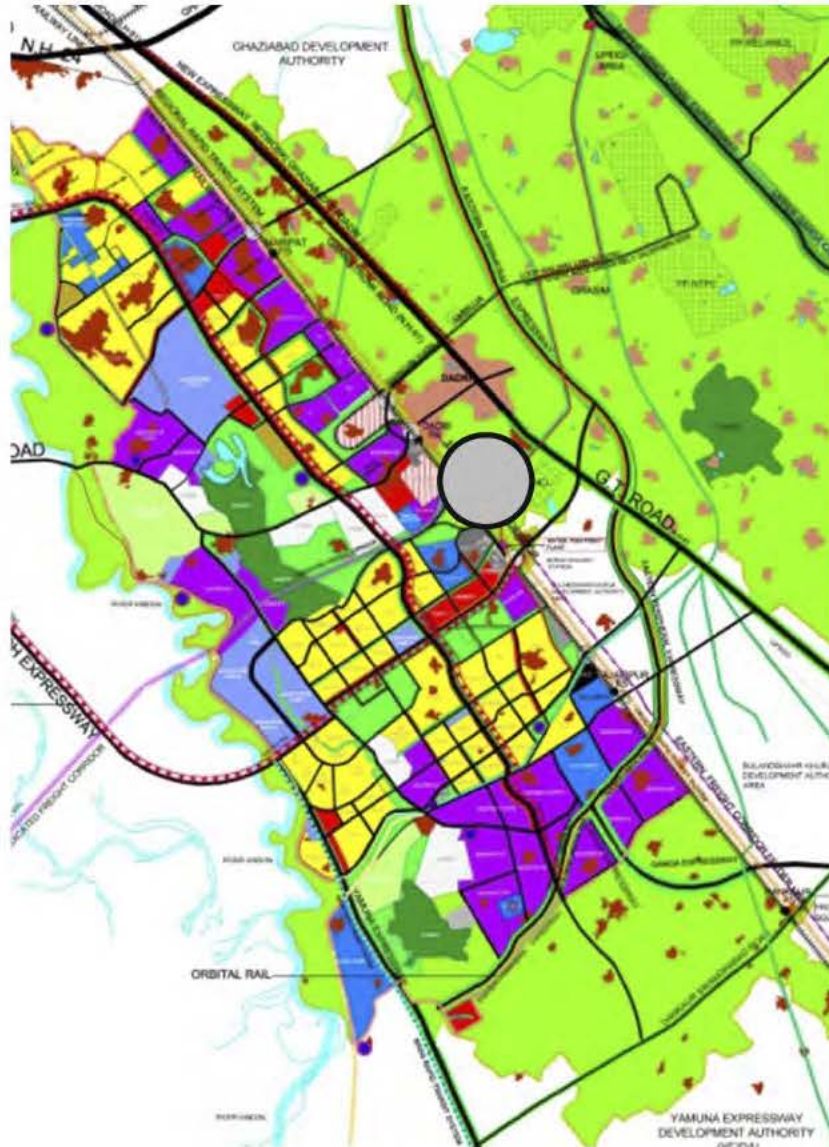


51% Industrial Land Use

Total Built-up- 6 Million sq. m

Total Employment- 58,000

Multi-Modal Logistics Hub- Site Location



Located in Greater Noida

Located on NH-91 and Delhi-Howrah
BG Line

Power Plants



Gas based Power Plants

Capacity: **1000-1200** MW each.

Sites:

Ville Bhagad, District Raigad, Maharashtra

Chainpura, District Guna, Madhya Pradesh

Indapur, District Pune, Maharashtra

Vaghel, District Patan, Gujarat

Rajpur-Shahpur, District Mehsana, Gujarat



Dahej Desalination Project

Project	Construction of a sea water reverse osmosis (“ SWRO ”) desalination plant in Dahej, Gujarat.
Sponsors	Hitachi, Hyflux and Itochu
Production Volume	75 million gallons per day (“ MGD ”) / 336 MLD
Total Project Cost	USD [606] Million*
Offtaker	Dahej Special Economic Zone Ltd. (“ DSL ”), a JV of ONGC Petro Additions Ltd (“ OPaL ”) and Gujarat Industrial Development Corporation
Water Purchase Agreement (“WPA”)	[30]-year WPA with DSL on 100% take or pay guarantee backed by GIDC
Tariff	INR [37]* per cum +6.25%* p.a. Escalation + WPI on the variable costs



*Indicative only

Model Solar Project-Neemrana

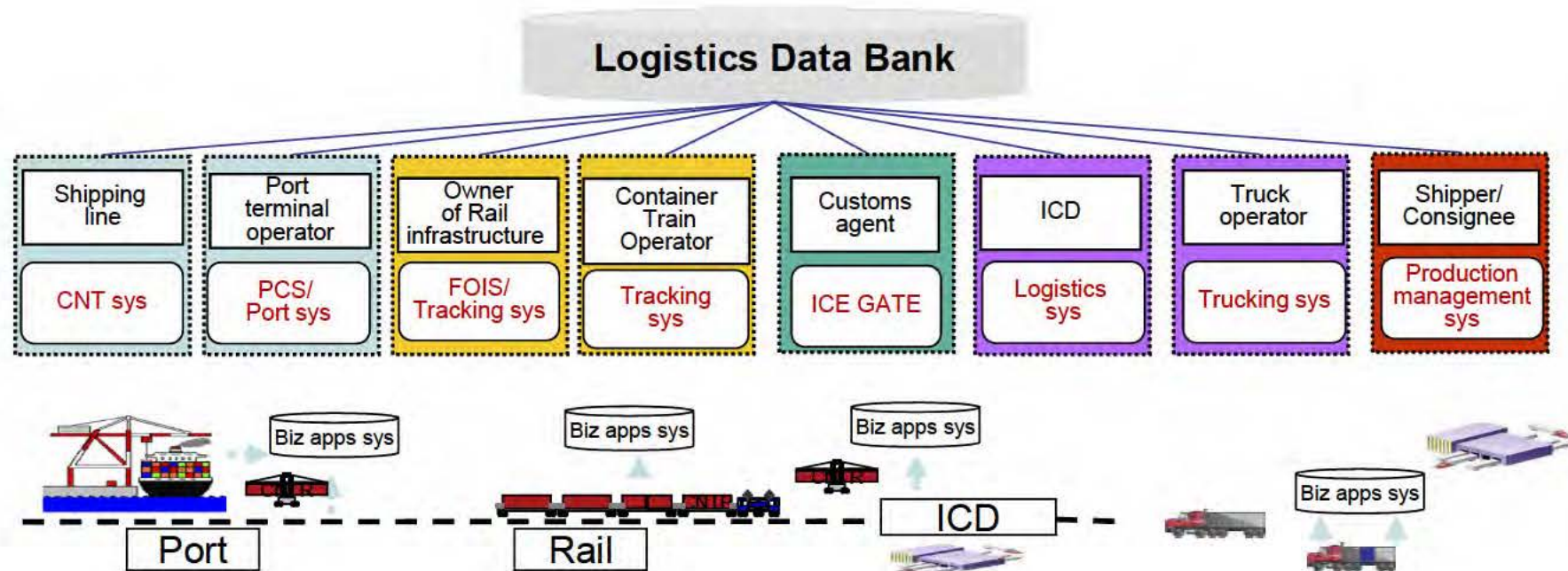


- **MoU:** New Energy & Industrial Technology Development Organization (NEDO), Ministry of New & Renewable Energy (MNRE), Ministry of Finance (MoF) and DMICDC dated April 30, 2012
- **Location:** Neemrana Industrial Park, Japanese Zone, Rajasthan, INDIA
- **Project Scheme:** 6.00 MWp Solar PV & 1.6 MW DG Power
 - 5.00 MWp Solar Power Project Feeding Power to the Commercial Grid under JNNSM scheme
 - 1.00 MWp Solar Power Project and 1.60 MW Diesel Generator Set integrated with Smart Micro Grid, Feeding Power to Industrial Consumers in Neemrana Industrial Park

DMIC Logistics Data Bank

Aimed at improving competition, reducing transportation lead time and cost by **sharing container movement information on real time basis among all agencies in the Supply Chain using an IT based platform.**

Necessary to create an extensive database at an early stage to generate rapid changes in supply chain.



Early Bird Projects

Integrated Industrial Township at Greater Noida

- Strategically located near Delhi and spread over an area of 747.5 acres in Greater Noida
- Employment generation capacity of over 2 lakh jobs
- Will attract investment to the tune of Rs. 35000 crores
- Complete plug and play factories with vertical manufacturing
- Suitable for High Tech, R & D, Bio –tech industries



-
- The map illustrates the study area, which is a section of the railway line between Karchha and Madhopur. The railway line is shown as a blue line running horizontally across the top of the map. The area is divided into several colored regions: yellow, red, green, and purple. The villages shown are Narwar, Karchha, Murjekhed, Gerd, Sankheri, Madhopur, and Piyokha Dwarhadish. The map also shows the railway line and the surrounding area, including the railway station at Karchha and the railway line running through the area. A north arrow is located in the top right corner of the map.

Global City project, Haryana

- Spread over an area of **1100** acres close to Gurgaon
- Has the potential to generate **25%** more GDP than that of Gurgaon
- Will generate over to **200000** jobs



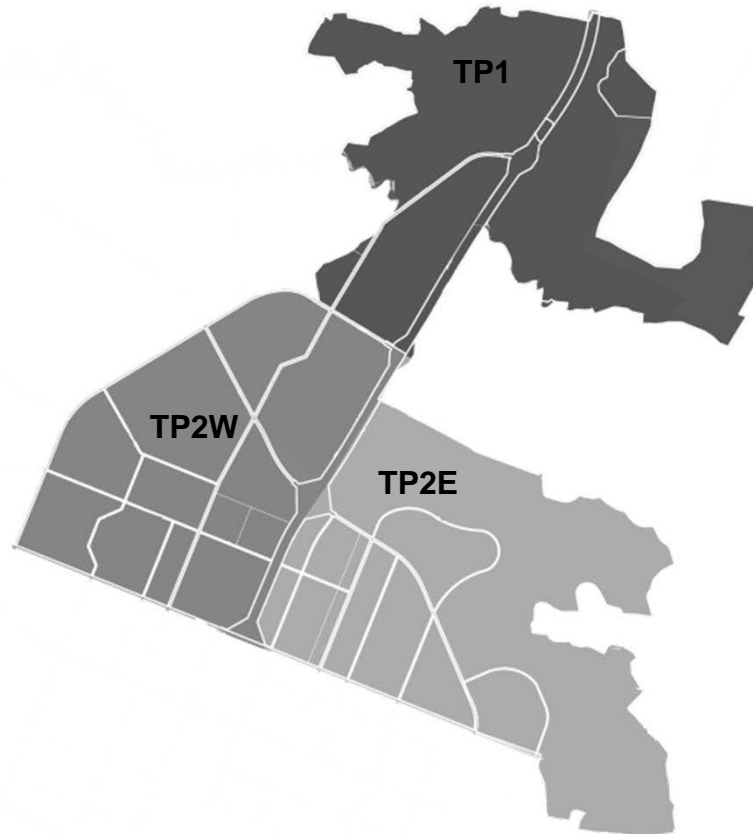
Dholera Phase -1 in Gujarat

Area to be developed in phase 1a-

154 sq. kms

Validated Construction Cost (2013) ~

INR **20,000** Crores (USD 3333 Million)



Base (Flat) Infrastructure Include:



Roads and Utilities (TP 1 & 2) : 550 kms



Potable Water: Raw Water Pipeline from Periej Dam and Water Treatment



Sewage: CETP and STP (RecyclePlants)



Industrial Water: Effluent Pipeline from AMC & Tertiary Treatment Plant



Stormwater: Collection and Treatment



Flood: River Training and Bunding



Solid waste: Transfer and Treatment



Power: Transmission and Distribution



ICT: Networks



Related Projects (RRTS/MRTS, Airport)



Phase – 1 of new industrial city at Shendra, Maharashtra (24 sq. kms)



Multi Modal Logistics Park at Karmad (125 acres)

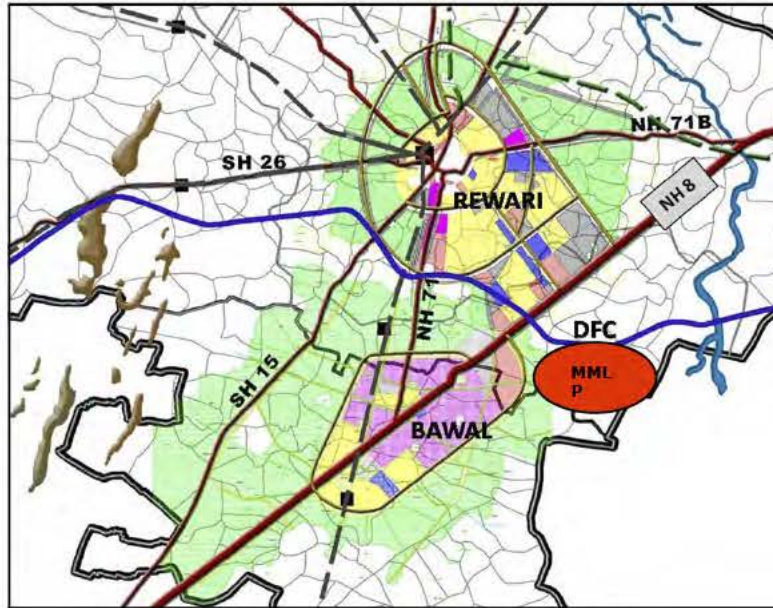


Water Supply Scheme for Shendra



Mixed used development over an area of 50 acres

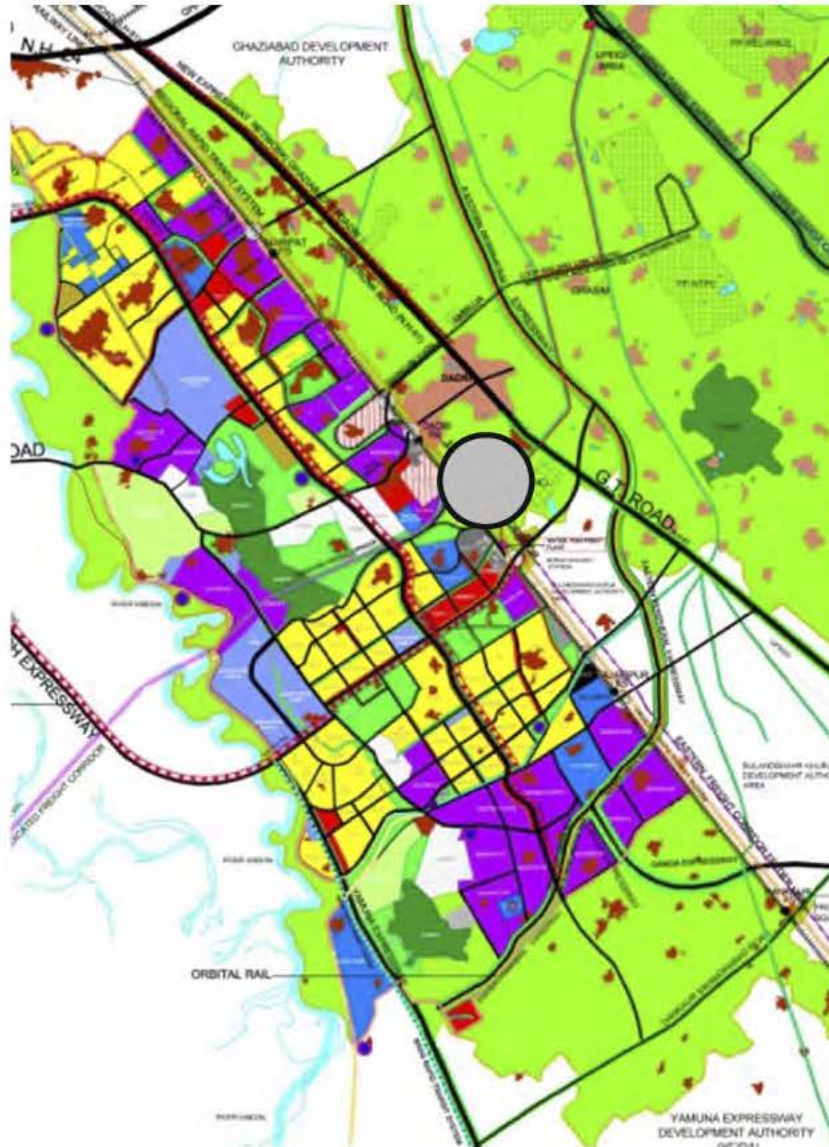
Multi Modal Logistics City at Rewari



- Strategically located at intersection of National Highway 8 and DFC
- Potential to become a Regional Hub serving NCR, especially Gurgaon, Bhiwadi and DMIC Manesar-Bawal & Neemrana Investment Regions
- Capacity : **>1.39 mn TEUs** per yr plus Automobile traffic
- Site: ~ **900 acres**



Multi-Modal Logistics Hub- Site Location



Located in Greater Noida

Located on NH-91 and Delhi-Howrah
BG Line

Other MMLPs being planned in DMIC Region

- MMLP - Pithampur, Madhya Pradesh - 175 acres
- MMLP - Karmad, Maharashtra - 125 acres
- MMLP - Sanand, Gujarat - 500 acres

Key components:

- Integrated systems accessible by multiple modes of transport
- Container terminals
- Warehouses
- 3rd Party logistics players
- ICD/CFSs
- Banking and Insurance
- Facilities for manufacturing, packaging, parking, mechanized handling, inter-modal transfers, sorting and grading.
- Aggregation/disaggregation to handle domestic and EXIM Freight.
Integrated systems accessible by multiple modes of transport.



Exhibition cum Convention centre at Dwarka, New Delhi



- Strategically located in Sec 25-26, Dwarka near Delhi IGI Airport
- Will generate approx 200,000 jobs by 2040

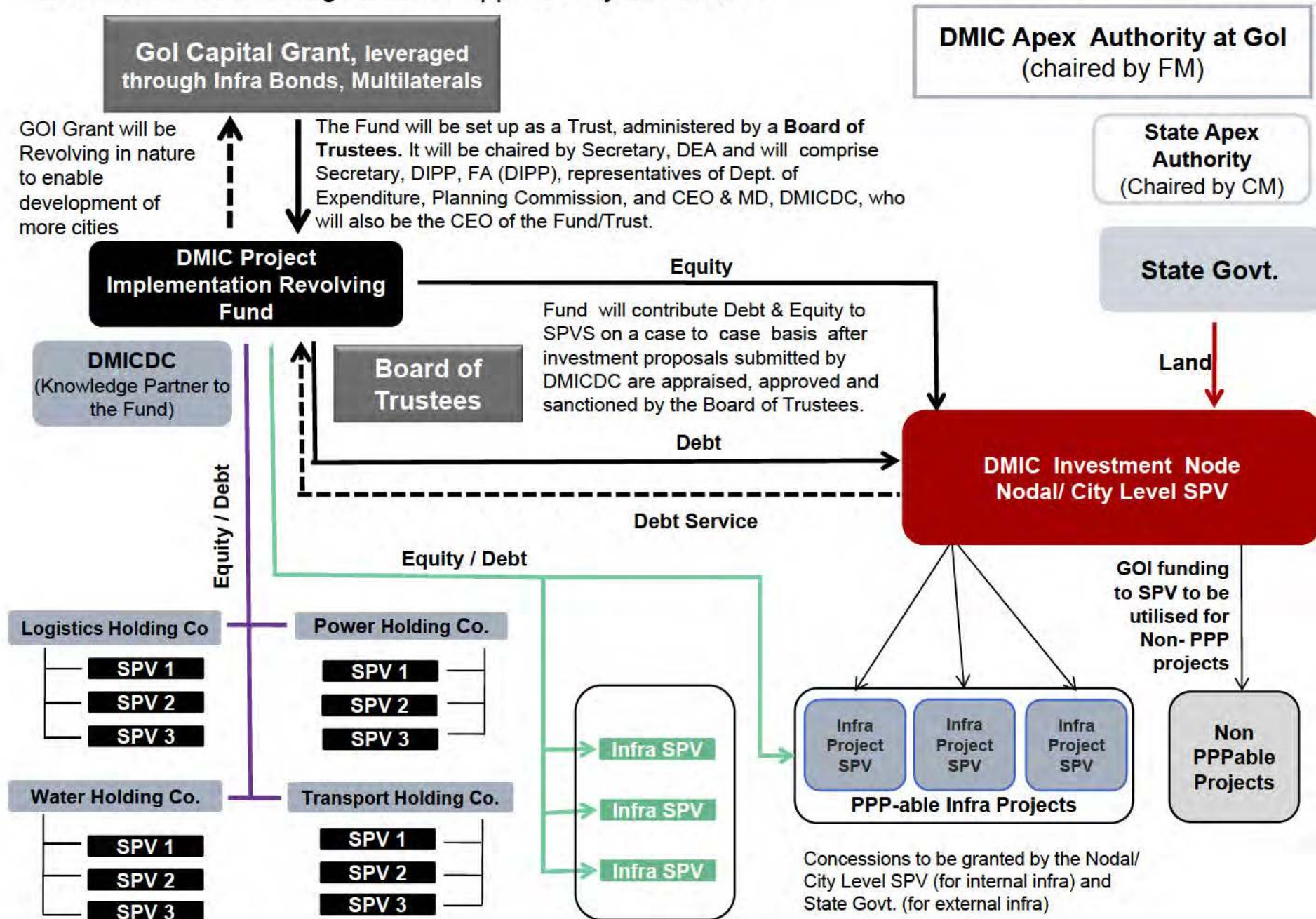
ECC & IFC at Dwarka- Concept Plan



**Total Site Area- 154 Ha
(380.53 acres)**

- **Exhibition halls** – 2 million square feet
- **Convention centre**- 6000 fixed seating capacity
- **Multi-purpose Arena**- 18,000 capacity
- **3500 hotel keys**- 4-5 star, business hotels, service apartments
- **Commercial office space**
- **Multi-level parking**
- **Green open space**
- **IFC** – to be developed as Air Cargo Complex

Institutional & Financing Structure approved by the Cabinet



Opportunities across the value chain...1/2

PPP

- The policy and regulatory frameworks (concession agreements) are well established
- Substantial scale-up in the last 5 years which has created opportunities for various companies to venture as “Project Developers

Contractors/ Consultants

- Business Opportunities from implementing agencies who will sub contract construction
- Skilled manpower and sophisticated construction technology available
- Mega projects like Delhi Metro, Highway, airports, ports projects have already showcased business opportunities for contractors

O&M Operators

- Emerging area of opportunity and has few players
- Going forward, the sectors will require equipments, systems and software

Opportunities across the value chain...2/2

Equipment Suppliers

- Consistent demand of equipment due to mega infrastructure development across sectors
- Huge business potential for overseas players to enter the market

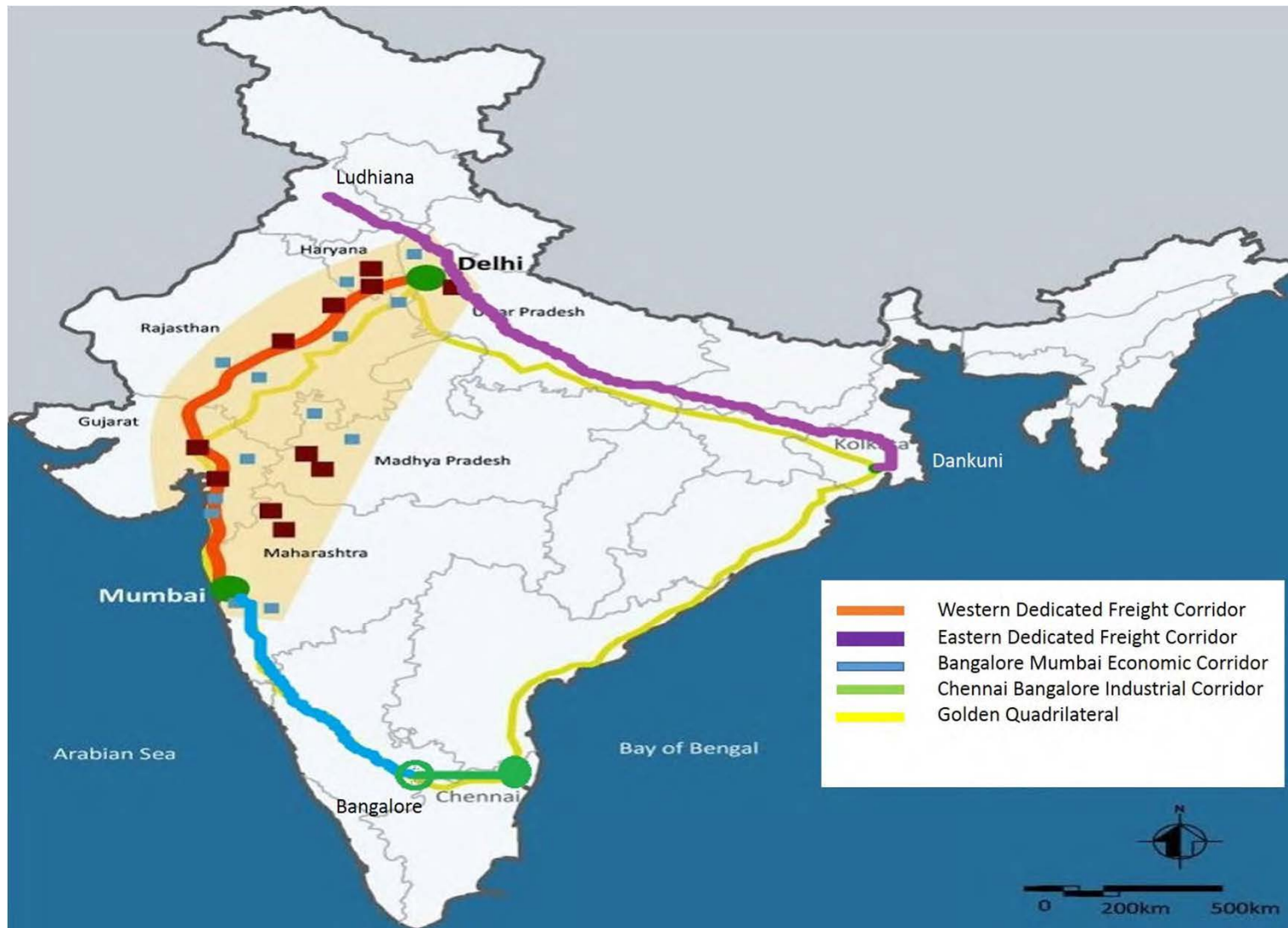
Rolling Stock Suppliers

- Increasing demand for various types of passenger & freight rolling stock
- Current domestic capacity caters half the demand and hence increasing imports
- Attractive opportunity exists for private players

Financing

- Various Financial Institutions and PE firms have already entered into the development area, incl. several Japanese banks
- Attractive opportunity exists for FIs, PE firms, private investors

Other Industrial Corridors being planned in India



These corridors will transform India as a manufacturing hub in next one decade.

Thank you